

Applications



Night Driving

www.firavision.com





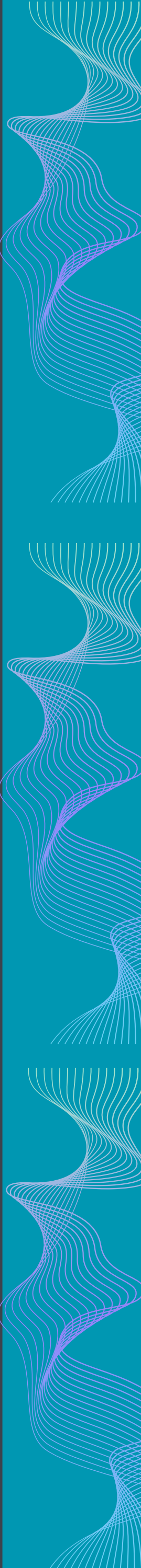
Dangers of Night Driving?

Road authorities agree that night driving presents unique challenges, increased risks and numerous deaths and injuries. It is estimated that traffic death rates are three times greater at night than during the day.

Many drivers believe that there is safety in reduced traffic and are unaware of how to deal with the challenges of driving at night, sharing the roads with those less responsible road users venturing onto the roads.

The most obvious way to avoid the dangers inherent to night driving is to simply not drive at night - and for long travels to use other forms of transport if they are available.

While we advise against driving at night, where possible, we recognize that some have to drive at night and cannot delay travel for daytime and good weather. In this section, we would like to share advice and provide information that may make driving at night a bit safer!



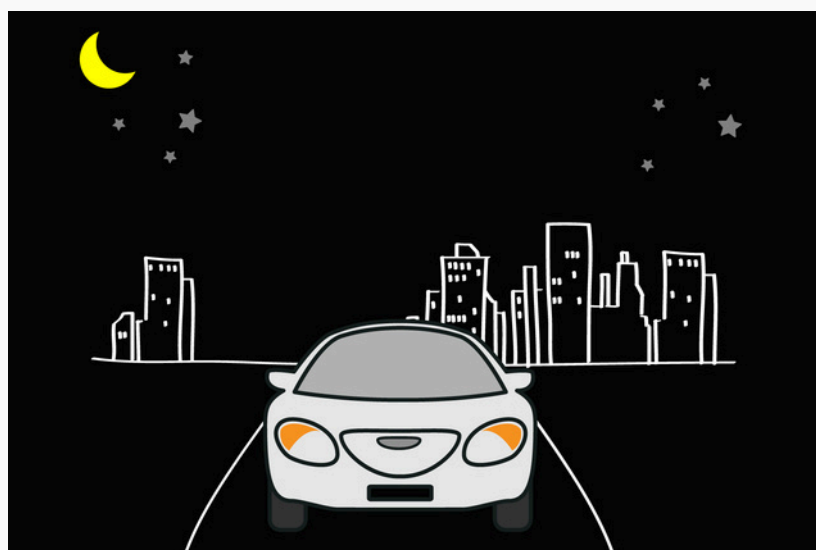
Why is driving at night so dangerous?

2

Why is driving at night so dangerous?

There are many reasons for the increased risks. They include:

- Decreased visibility. Depth perception, colour recognition, and peripheral vision are compromised after sundown.
- Many inexperienced young drivers are on the roads at night and do not have the skills and concentration that comes with experience.
- Elderly drivers need more light to see as well as younger drivers.
- Vulnerable road users such as pedestrians, cyclists and bikers are often not clearly visible to motorists and vice versa.
- Reduced ability to judge speed and distance at night.
- Sharing the roads with many drunk drivers and pedestrians returning from bars, parties etc. late at night.
- Sharing the roads with fatigued drivers after a hard day of work or those who have been driving long distances.
- Vehicle lighting cannot illuminate very far allowing little time and space to react and bring the vehicle to a stop.
- Wildlife venture onto the roads with these risks increased in areas where fences are broken or removed.





The Solution

The FIRA DA Series of Driving Assistance cameras provide a crisp clear images. They are highly reliable and come with Auto Defrosting, various communication interfaces, optional Pedestrian Detection Systems (PDS) and an optional reinforced low temperature display. For added visibility the DA-B series adds a high quality visual camera



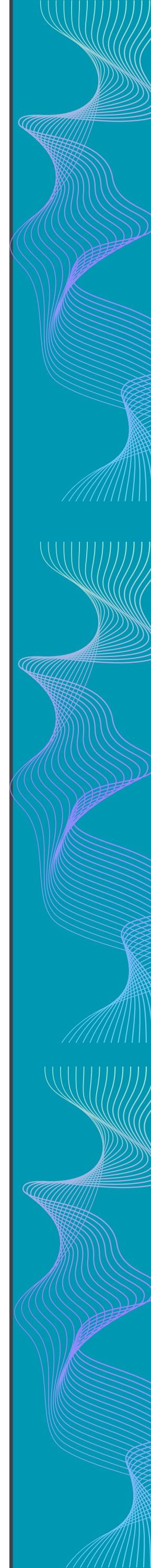
DA Series



DA-B Series

Model	DA200	DA300	DA600	DA1000
Resolution	256 × 192@12 μm	384 × 288@12 μm	640×512@12 μm	1024×768@12 μm
FOV	40°×30° or 24.8°×18.7°	24.7°×18.7°	28.7°×23.1°	44.6°×34.2°
Detection Distance	Car≥300m, Human≥50m	Car≥500m, Human≥200m	Car≥700m, Human≥300m	Car≥800m, Human≥300m

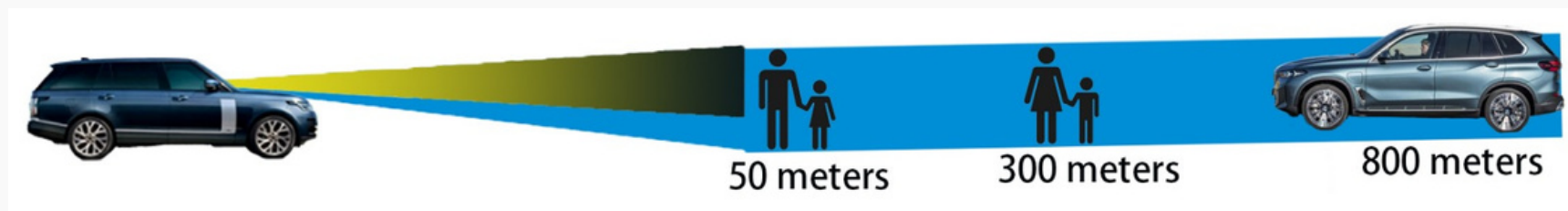
Model	DA300-B	DA600-B	DA1000-B
Resolution	384 × 288@12 μm	640×512@12 μm	1024×768@12 μm
FOV	24.7°×18.7°	28.7°×23.1°	44.6°×34.2°
Detection Distance	Car 500m, Human 200m	Car≥700m, Human≥300m	Car≥800m, Human≥300m



The Result



Fira Vision's Safety First driving assistance cameras can help the driver see further at night and in bad weather conditions. With your normal head lights at night a driver can see approximately 50m. With the DA series the driver can see pedestrians and animals at 300m and vehicles at up to 800 meters, it can see through fog, mist and light rain.



Our Pedestrian Protection System (PDS) can highlight human and animal dangers in the field of view of the driver.



Contact Us

sales@firavision.com