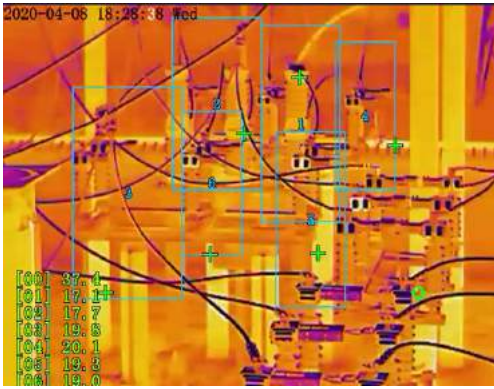


Bi Spectrum Thermal Camera

- 640×512 resolution IR detector
- IP66 rated for use in harsh environments
- Intelligent software supports industrial temperature monitoring using spot, line and area measurement tools
- A high resolution Sony visual camera gives crisp digital images



SPECIFICATION

Models	IM600-B		
Thermal Module			
Detector Type	Uncooled VOx Focal Plane Arrays 640×512		
Resolution	Sensor is 640×512, Image can be scaled up to 1280×1024		
Pixel Pitch	12 μm		
NETD	≤40 mK		
Spectral Range	8~14 μm		
Image Setting	Brightness, Sharpness, Contrast, Mirror, FFC control, 2D/3D DNR		
Pseudo-color Setting	White-hot/Black-hot/Rainbow/Ironbow etc. up to 17 modes		
Thermal Lens			
Focus Control	Fixed Focus, Free Focus		
Focal Length	9mm	15mm	25mm
Aperture	F1.0	F1.0	F1.0
Angle of View	H: 48°, V:38°	H:32°, V:26°	H:17°, V:14°
Detection Distance (Human:1.8×0.5m)	375m	624m	1042m
Detection Distance (Vehicle:4×1.5m)	1150m	1917m	3194m
Recognition Distance (Human:1.8×0.5m)	94m	156m	3194m
Recognition Distance (Vehicle:4×1.5m)	288m	479m	799m
Identification Distance (Human:1.8×0.5m)	47m	78m	130m
Identification Distance (Vehicle:4×1.5m)	144m	240m	399m
Optical Module			
Image Senso	1/2.8" Sony CMOS		
Effective Resolution	2592 (H)×1520 (V)		
Shutter Speed	1/5 ~ 1/20,000s		
Min. Illumination	Color: 0.01 Lux @ (F1.2, AGC ON), B/W: 0.001 Lux		
WDR	True WDR		
Focal Length	5.3 ~ 159 mm, 30X optical zoom		
Max Aperture	F1.6 ~ F4.3		
Angle of View	H:55° ~ 2.3°, H: 41.6° ~ 1.7°		
Digital Zoom	16x		
Focus Control	Auto/Manual/Semi-automatic		
Mirror	Support		
Defog	Support		
Privacy Masking	Support		
Illumination Distance	Up to 30m (98.4 ft, White)		

PTZ	
Pan/Tilt Range	Pan: 0° ~ 360° endless, Tilt: +90° ~ -90°
Pan/Tilt Speed	Pan: 0.01° ~ 30°/s, Tilt: 0.01° ~ 10°/s
Wiper	Support
Preset Accuracy	± 0.1°
Presets	400
Scan	8 scans, up to 32 presets per scan
Patrol	12 patrols, up to 32 presets per scan
Track	6 tracks
3D Positioning	Support
Speed Setup	Auto/Manual (0-8)
Power Off Memory	Support
Idle Motion	It can activate Preset/ Scan/Tour/Pattern if there is no command in the specified period
Video and Audio	
Main Stream	Thermal: 1280×1024, 1280×720, 640×512 @ 25/30fps Optical: 2592×1520, 2560×1440, 2304×1296, 1920×1080, 1280×720 @ 25/30fps
Sub Stream	Thermal: D1, CIF @ 25/30fps Optical: D1, VGA, 640×360, CIF, QCIF, QVGA @ 25/30fps
Bit Rate Control	CBR/VBR
Bit Rate	Thermal: Main stream: 100Kbps~8Mbps, Sub stream: 100Kbps~6Mbps Optical: Main stream: 100Kbps~12Mbps, Sub stream: 100Kbps~6Mbps
Region of Interest	Off/On (8 Zone, Rectangle)
Audio Compression	G.711 (8kbps), RAW_PCM (16kbps)
Smart Function	
Smart Alarm	Motion detection, Disk alarm, I/O alarm, IVS alarm, Temperature detection & alarm
Smart Detection	Support human/vehicle detection, fire point detection, smoke and fire detection
Intelligent Analysis	Intrusion, Single line crossing, Double line crossing, Loitering, Wrong-way, Enter area, Leave area Support alarm triggering by specified target types (human and vehicle), People Counting
Temperature Detection	
Temperature Detection	3 temperature measurement rule types, 20 rules in total, 1 full screen, 19 others (spot, areas, line).
Temperature Alarm	Over temperature alarm, Temperature difference alarm
Accuracy	±2°C / ±2%
Response Time	≤ 30ms
Temperature Range	-20°C to 150°C (-4°F to 302°F), -20°C to 550°C (-4°F to 1022°F) Optional
Network	
Protocols	IPv4/IPv6, RTSP/RTP/RTCP, TCP/UDP, HTTP, DHCP, DNS, FTP, DDNS, PPPOE, SMTP, 802.1x
Interoperability	ONVIF, CGI, SDK
Max. User Access	10 Users
Web Viewer	<le11, Chrome, Firefox, Microsoft Edge
Web Language	English, Chinese, Polish, Italian, Portuguese, Spanish, Russian, French, Czech, Hungarian
Interface	
Network Interface	2 Ethernet (10/100 Base-T) RJ-45 Connector
Audio Interface	1ch input, 1ch output
Alarm Interface	1ch output
Rs485	Support
CVBS Interface	1ch output
Reset Button	Support (Built-in)
SD Card Slot	Built-in, up to 256GB
General	
Power Supply	DC24V
Power Consumption	Max 40 W
Working Temperature	-30°C ~ 60°C (-22°F ~ 140°F)
Storage Conditions	0~ 90% RH
Certifications	CE/FCC
Ingress Protection	IP66
Casing	Metal
Dimensions	323 × 192.5 × 177 mm (12.71 × 7.58 × 6.97 inch)
Net Weight	5 kg (11.0 lb)